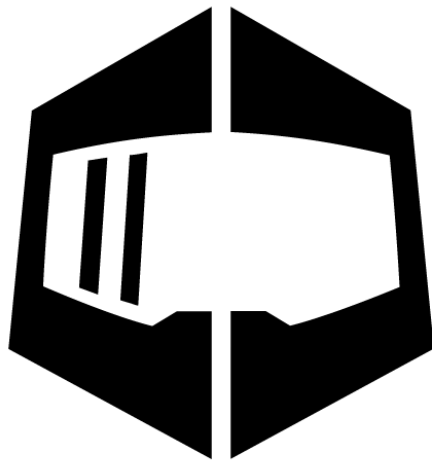


# SC2 Ultimate antenna connector replacement guide

Version	Date	Changelog
V1	22.1.2021	First version
V2	25.1.2021	Add Simucube logo and tidy-up



**SIMUCUBE**

## Step 1: Disconnect all wires from the unit.

Power the unit off, disconnect all wires. Leave unit without any powered wires (DC and USB connector) for 10 minutes.

## Step 2: Unscrew the endplate

Place the motor on a clean table surface. Avoid scratching the unit.

Unscrew the four torx screws marked by **RED** circles.

Locate the **antenna connector** (not in this picture)



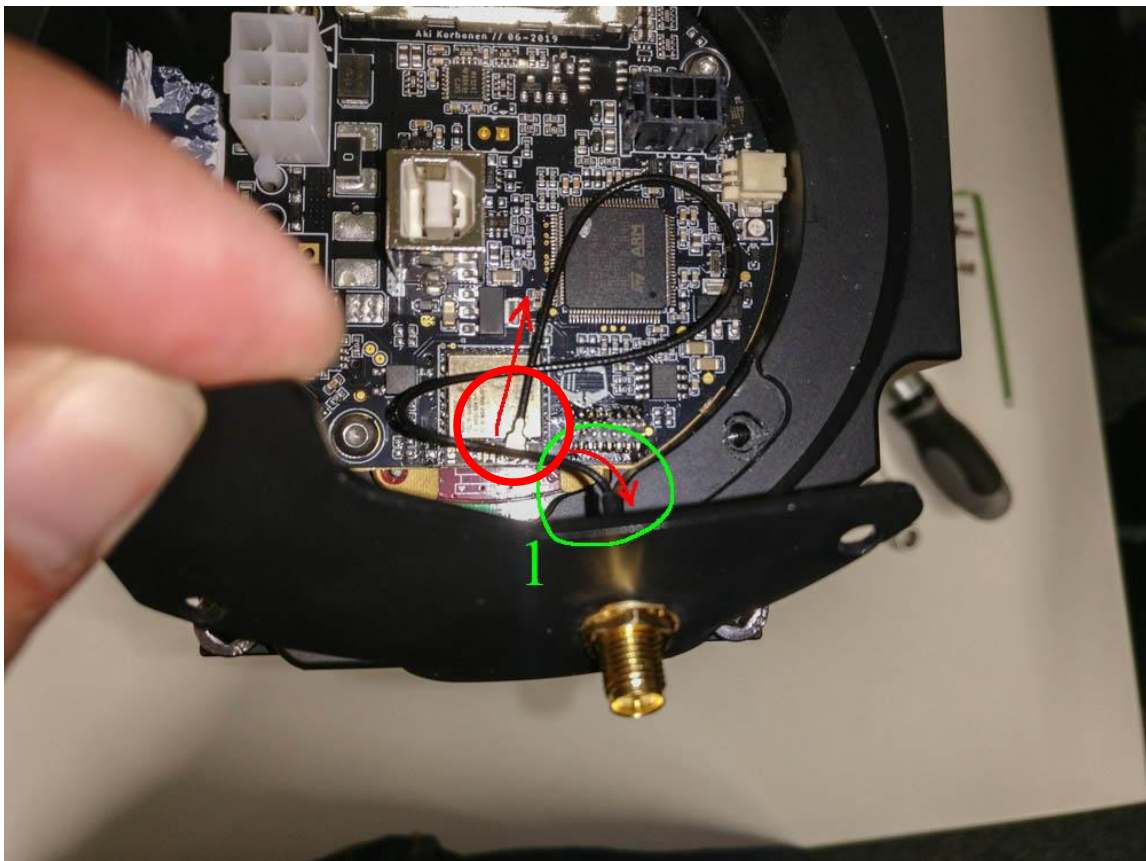
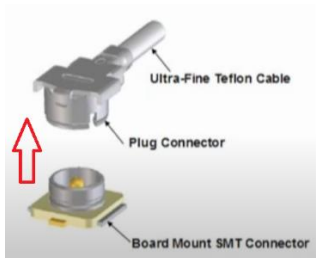
**NOTE:** Make sure not to squeeze any cables between parts and damaging them when reassembling this step.

### Step 3: U.FL connector

Remove the endplate.

Remove the RF-window.

Disconnect the antenna from the **u.FL connector** by pulling the connector away from the PCB.

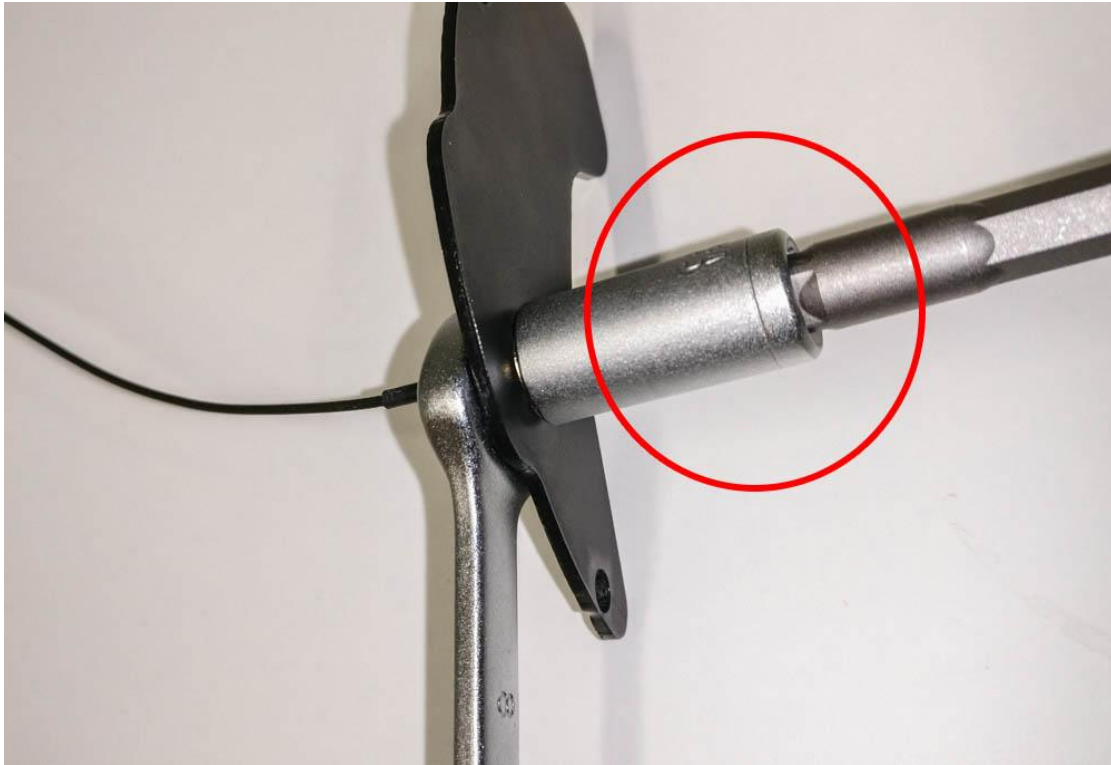


Note the orientation of the RF-window for reassembly.

**NOTE:** Do not touch the or replace the thermal paste.

## Step 4: Cable replacement

Unscrew the antenna connector using two 8mm wrenches. Note the arrangement of the washers.



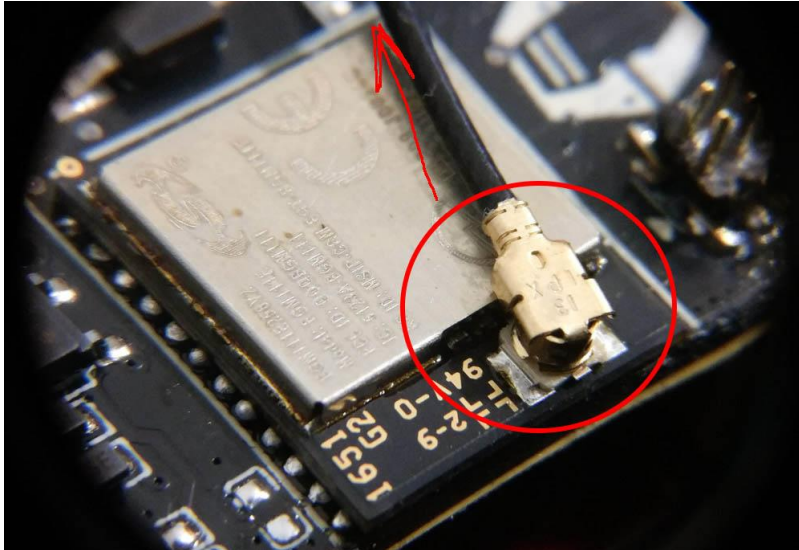
Install the new antenna connector with its washers. Tighten the nut so the connector will not rotate when installing the antenna.

**NOTE: Overtightening might deform the plastic.**

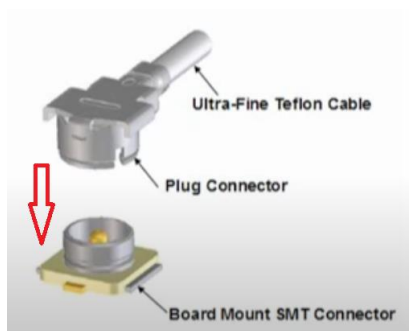


## Step 5: Reconnecting the u.FL cable

Note the cable orientation: Orientate the cable according to the arrow when reassembling, if unit has long antenna cable. If unit has shorter cable, orientate 90 degrees counter-clockwise from the arrow in the image.



Gently push the u.FL connector all the way down.



Try to prevent turning or bending the cable after installation as the connector is not very strong.

## Step 6: Reassembly

Reverse steps 2-3 to reassemble the device.