



SIMUCUBE

Simucube 2

Sport / Pro / Ultimate

User Guide

Version 1.0
June 6th, 2019

User Guide changelog

| Version | Date | Changes |
|---------|------------|-----------------|
| 1.0 | 2019/06/06 | Initial release |
| | | |
| | | |
| | | |
| | | |
| | | |

Warnings and guidelines for safe operation

- Do not grab, hold or insert fingers, etc objects to the rotating parts in a way where letting go immediately is not always possible
- Do not operate Quick Release when the device is powered ON and connected to a PC.
 - Always disable torque by pressing Torque off button before removing or attaching wheel
 - Do not release Torque off button unless Quick Release has been securely clamped with Quick Release pin
- Do not set torque level higher than the level user can safely hold with a single hand grip
- If torque gets too high to control safely, let both hands off the wheel and press the Torque off button
- Preventing motion by the means of True Drive or simulator software are not reliable ways to prevent motion
- Device user must be an adult and physically and mentally fit person
- Usage of the device is allowed only by an instructed person who understands and follows the above safety instructions
- If the device becomes damaged in any way, stop using it immediately and contact the reseller
- Using the vibration and force feedback may cause damage to your health
- Do not open the casing of the device or the power supply. There are no user serviceable parts inside, and disassembling will void manufacturer's warranty.
- Do not use the device with a power source other than the power supply packaged with the Simucube 2 or received from an authorized reseller. Do not operate SC2 Pro model with only one power supply connected and powered.
- Do not use the device with any cables other than the cables packaged with the Simucube 2 or received from an authorized reseller
- This product has magnets which may interfere with pacemakers, defibrillators and programmable shunt valves or other medical devices. Do not put this product close to these medical devices and the person who use any of these medical devices. Consult your doctor before using this product, if you have any concerns.
- Operating temperature: 15°C – 30°C room temperature, non-condensing humidity
- Rotating high torque parts
 - Shaft torque up to 32 Nm
 - Shaft rotation speed up to 360 RPM
 - Shaft mechanical power up to 600W
- Hazard of entangling to rotating parts
 - Pull force may exceed 130 kg / 270 lbs / 800 N when wire, rope, hair or similar object tangles on 5 cm / 2" spool diameter (such as output shaft of the device)
- Hot surface
 - Device surface temperature may reach 70°C or 158°F.
 - Sudden rotation / vibration
 - Device may start producing motion unexpectedly



Rotating shaft
Rotierenden Welle
Arbre rotatif
Eje de rotación

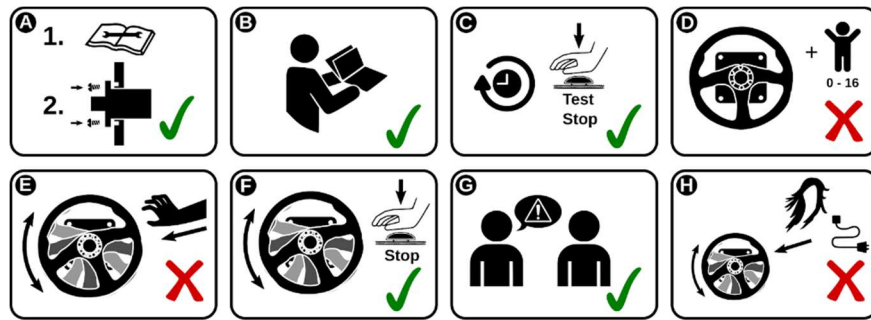


High torque
Hohes Drehmoment
Couple élevé
Alto par



Hot surface
Heisse Oberfläche
Surface chaude
Superficie caliente

Safe usage instructions



- A.** Mount device securely to a rigid platform before use. Fix Simucube 2 to a proper table mount or a racing rig that is Simucube 2 compatible with all four fixings screws that are included. Do not use other types of fixings. Never operate the product without fixing it first as instructed in this User Guide.
- B.** Read this user guide completely before installing or operating the device.
- C.** Test functioning of the Torque off button before each usage session.
- D.** Keep children away from the device.
- E.** Do not attempt to stop freely rotating parts by grabbing.
- F.** Always use the Torque off button or power off the device to stop and prevent motion.
- G.** Instruct other users of the device about the safe usage.
- H.** Keep hair, cables, clothing and other entangling items clear from the rotating parts.

Technical Datasheet

| | SIMUCUBE 2 Sport | SIMUCUBE 2 Pro | SIMUCUBE 2 Ultimate |
|----------------------------------|--|--|---|
| Motor | Direct Drive optimized ultra low torque ripple motor | High response speed Direct Drive optimized ultra low torque ripple motor | Maximum response speed, low inertia, Direct Drive optimized ultra low torque ripple motor |
| Simucube Wireless Wheel™ support | Included | Included | Included |
| Simucube Quick Release™ | Included | Included | Included |
| Max torque * | 17 Nm | 25 Nm | 32 Nm |
| Max torque slew rate | 4.8 Nm/ms | 8.0 Nm/ms | 9.5 Nm/ms |
| Angle sensor | 22 bit absolute | 22 bit absolute | 24 bit Hiperface |
| Torque Off button | Standard (Premium optional) | Standard (Premium optional) | Premium (with remote power switch) |
| Power supply | 280 W | 2 x 280 W | 1000 W |
| Wheel base dimensions incl. SQR™ | 130 x 130 x 250 mm | 130 x 130 x 270 mm | 115 x 115 x 310 mm |
| Mounting holes | M8 x 4 pcs threaded hole | M8 x 4 pcs threaded hole | 9 mm dia x 4 pcs through hole |
| Mounting hole pattern dia | 145 mm | 145 mm | 130 mm |
| Flange centering hole dia | 110 mm | 110 mm | 110 mm |
| Wheel base weight | 8.0 kg | 11.1 kg | 11.3 kg |
| Standard warranty | 24 months | 24 months | 60 months |

3-D drawings of the Simucube 2 products can be found from the Simucube website at <http://www.simucu.be/>

What's included

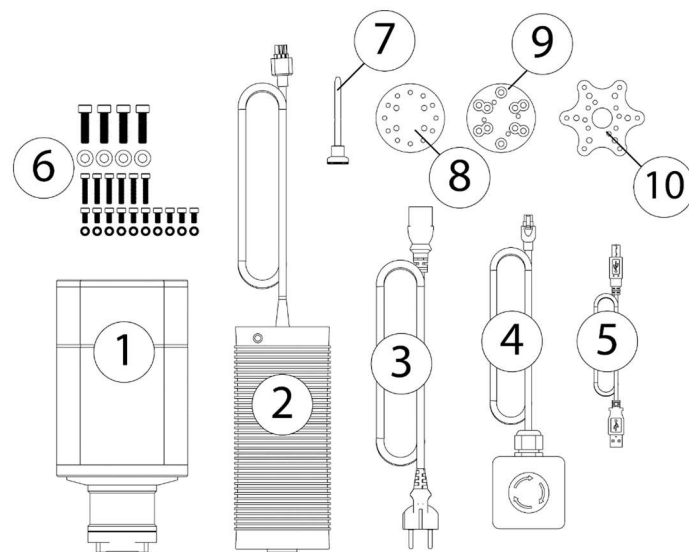


Figure 1 Simucube 2 Sport and Pro hardware

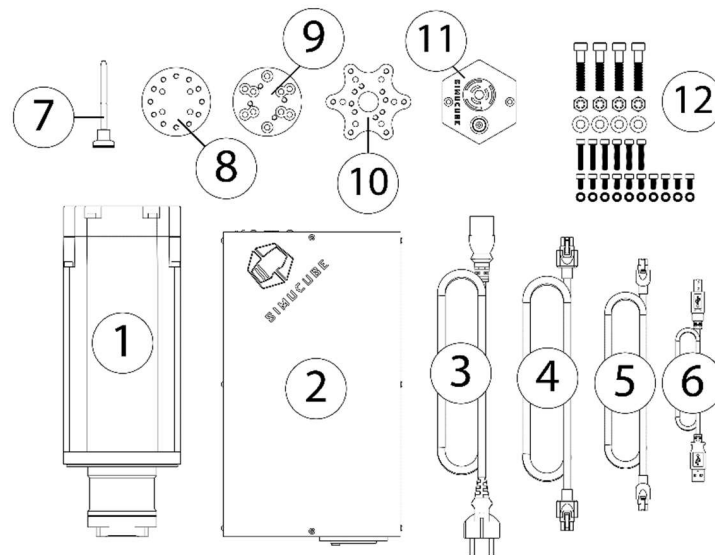


Figure 2 Simucube 2 Ultimate hardware

1. Simucube 2 wheel base
2. Power supply (1 pcs for Sport, 2 pcs for Pro, 1 pcs Custom for Ultimate)
3. Power supply AC-cable (EU) (1 pcs for Sport, 2 pcs for Pro, 1 pcs Custom for Ultimate)
4. Torque off button and cable (Sport and Pro)
5. USB cable
6. Fixings for wheel base and SQR
7. SQR pin
8. Wheel side SQR
9. 30mm Spacer
10. Adapter for 70mm wheels
11. Premium torque off button with separate cable (4) (Ultimate only)
12. Attachment bolts and washers for mounting the Simucube 2 and for the wheel-side SQR

Getting started

Mounting the motor on the simulator

Simucube 2 must always be rigidly mounted on the simulator rig for user safety.

Mounting option 1

Simucube 2 can be mounted with separate bracket that can convert the front mount to a horizontal platform (table) mounting as in Figure 3. Mounting brackets be found from Simucube resellers listed on <https://www.simucu.be> website.

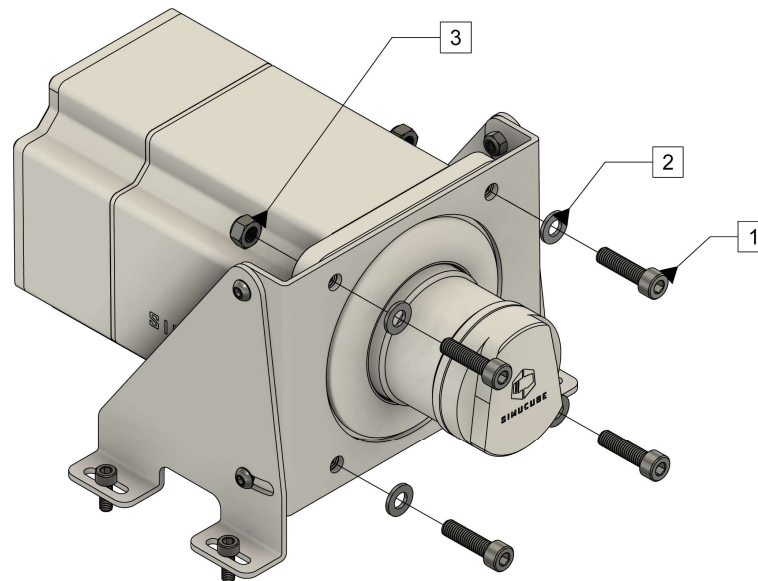


Figure 3 Mounting Simucube 2 using a mounting bracket.

Mount Simucube 2 as shown in Figure 3. Sport and Pro models are mounted with 30mm M8 bolts with 1.25mm thread pitch (1) and M8 flat washers (2). Simucube 2 Ultimate is mounted through-the-motor flange with bolts (1), washers (2) and a M8 locking nuts (3).

Mounting option 2

Simucube 2 can be mounted by utilizing a front mount bracket found on many simulator rigs as shown in Figure 4.

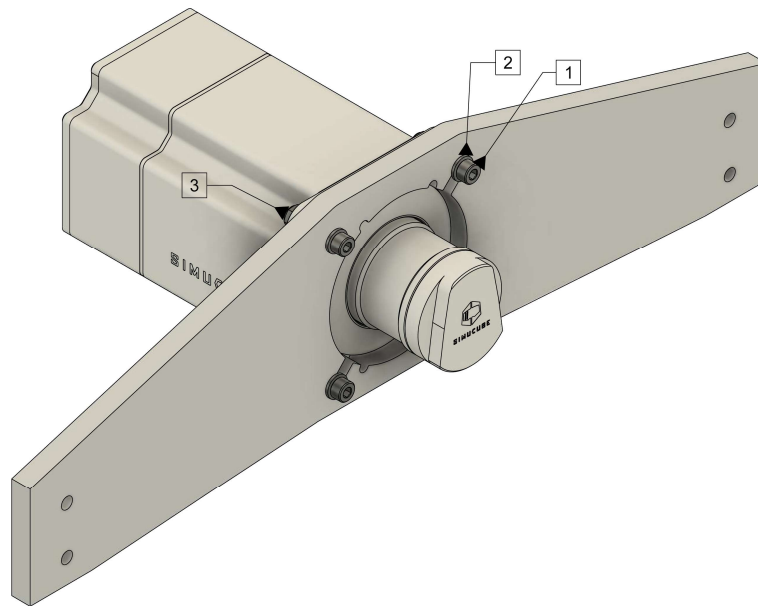


Figure 4 Mounting Simucube 2 on a simulator rig front mount bracket.

Mount Simucube 2 as shown in Figure 4. Sport and Pro models are mounted with 30mm M8 bolts with 1.25mm thread pitch (1) and M8 flat washers (2). Simucube 2 Ultimate is mounted through-the motor flange with bolts (1), washers (2) and a M8 locking nuts (3).

Wiring

Read and understand this chapter fully. Do not operate the product if you haven't fully read or understood this document. Check that main power switch at the back is off and all cables are unplugged before proceeding.

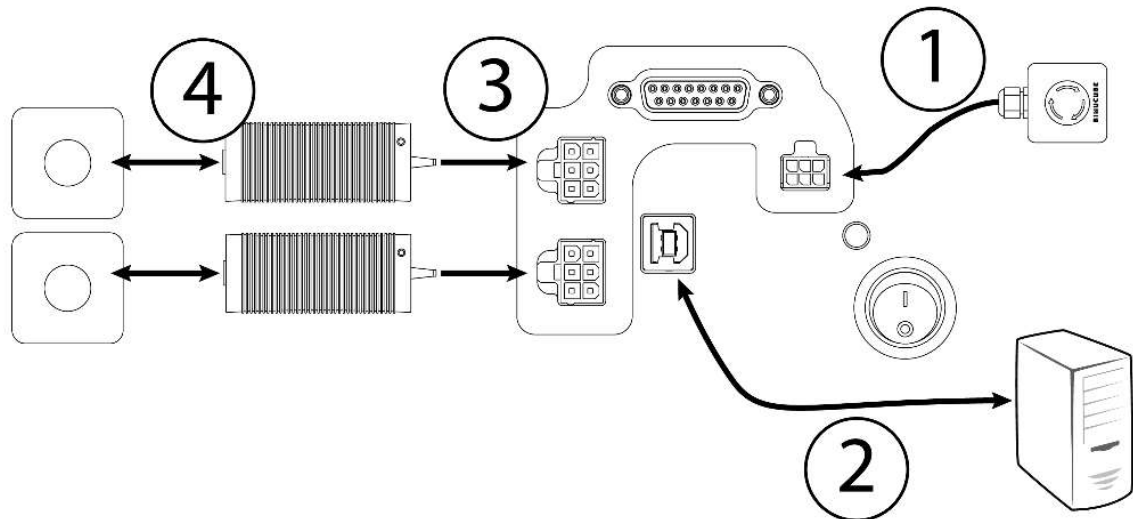


Figure 5 Simucube 2 Sport and Pro wiring diagram.

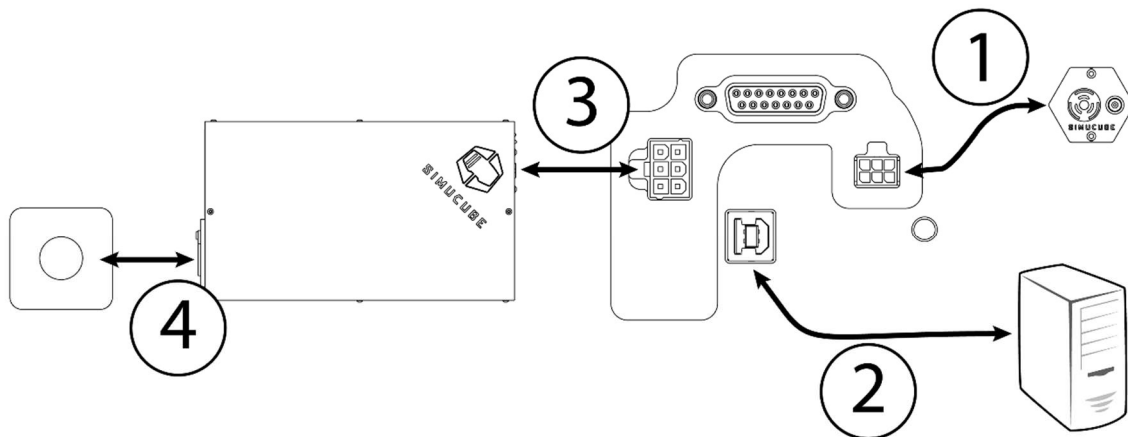


Figure 6 Simucube 2 Ultimate wiring diagram. Use Simucube 2 Ultimate only in a professional environment.

1. Connect remote Torque off button box to Simucube 2's TORQUE OFF connector.
2. Connect USB cable from Simucube 2 to PC.
3. Connect power supply/supplies to Simucube 2 POWER IN connectors.

Important:



- 1. Always connect POWER IN connector(s) on Simucube 2 first before connecting power supply to the AC outlet.**
- 2. Both power supplies must be used for Simucube 2 Pro.**
- 3. Simucube 2 Ultimate is to be used only in a professional environment.**

4. Connect power supply/supplies to 110 - 240 V AC outlet with protective earth (PE).
5. Fix steering wheel (not included) to Simucube Quick Release™ (SQR™). If required, install Spacer and/or 70 mm Adapter between the SQR wheel side part and the wheel.
6. Download and install True Drive software from <https://simucu.be> website. This product will not fully operate without installing the software for safety reasons.

Simucube Quick Release (SQR) User Guide

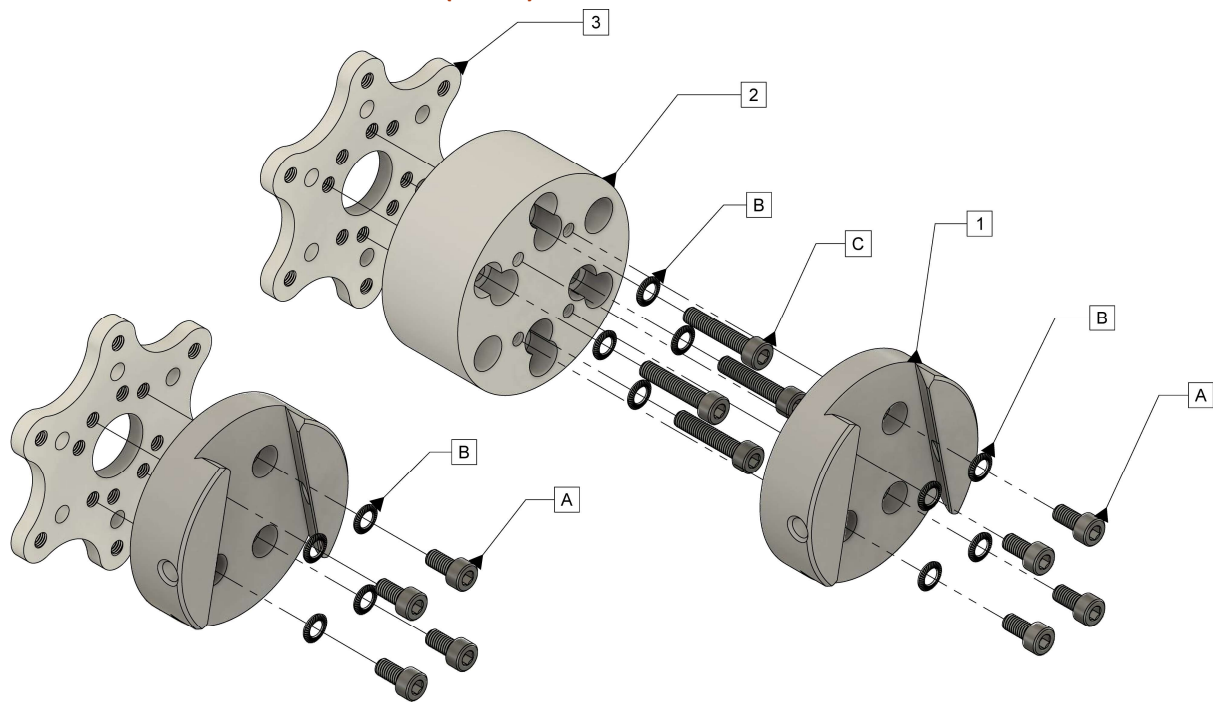


Figure 7 SQR assembly diagram

The Simucube Quick Release (SQR) consists of the following parts (Figure 7):

- (1) SQR Wheel-side part
- (2) SQR 30mm spacer
- (3) SQR 70mm bolt pattern adapter
- (A) 10mm long M5 cap-head bolts with 0.8mm thread pitch
- (B) M5 anti-vibration washer
- (C) 25mm long M5 cap head bolt with 0.8mm thread pitch

The SQR 70 mm adapter (3) can be used with

- front and back mounting 50,8 mm wheels
- front mounting 70 mm wheels.

Spacer (2) adds 30 mm distance between the SQR wheel side part (1) and steering wheel in order for the quick release connection pin to clear the paddle shifters. The SQR Wheel-side part (1) can be oriented as pictured here, or it can be turned 30 degrees to enable mounting the wheel-side SQR in slightly different orientation. Observe the bolt pattern of the wheel side wedge part to resolve the correct orientation with regards to other parts of your wheel.

NOTE: If correct length bolts to attach a steering wheel to the 70 mm adapter can't be found or are not supplied by the wheel manufacturer, then the most effective solution is to use 2-3 washers to adapt bolt length not to collide with the 30mm spacer part or the SQR part.

Simucube 2 True Drive Software download instructions

The software is available as a zip file from <https://www.simucu.be> website.

Unzip the file and start the Simucube 2 True Drive application. It is important to unzip the file – do not launch the application from inside the zip file.

True Drive Software

Simucube 2 True Drive software is a powerful tool to set up and use the Simucube device.

First start

On first startup, it is likely that the True drive software will show a firmware update prompt. Update the firmware using the wizard. True Drive will close upon successful finish of update, and relaunching will give user normal access to software.

Note: Take care that the torque off button (e-stop) is not pressed in on first power up when going to firmware update.

General

The user interface of the True Drive software is tabbed and the middle area shows the tab content.



Figure 8 True Drive software main screen

1: Status area shows the current status of the device and shows if the High Torque Mode is activated.

2: Left hand side of the software is the **tab bar.** Tabs from top to bottom: Overview (currently viewed), Simucube Wireless Wheels Management, Profiles and tuning settings, Hardware settings, Hardware debug information and status.

3: The bottom area of the window shows a clickable slowly blinking button if the current settings are not saved permanently to Simucube. Upon clicking it, the settings are saved to the Simucube. This area also shows a notification if settings could not be applied to Simucube.

Status area and High Torque Mode functionality

Status area shows the general status of the Simucube device. In general, the operating mode should indicate "Operational". Only other typical status is "Waiting for drive to get ready" which is shown, when the device is powered on, and the device waits for the user to release the Torque Off (E-stop) button.

After every power-on, the Simucube device is in safe torque mode. In this mode, the torque is limited to approximately 4.4 Nm and the wheel has additional friction and damping applied.

High torque mode, where high torque level is unlocked, must be enabled manually via pressing the "Enable High Torque Mode" button. A dialog is opened. The Driver must read the disclaimer about the mode carefully before enabling the High Torque Mode. Notification beep will also indicate the wheel changing into High Torque Mode, and the Simucube 2 LED will remain blue with two quick red blinks in this mode.

In High Torque mode, the damping and friction values in the settings will take effect over the forced high values in safe torque mode. This will result in the wheel becoming much easier to turn.

Taking the first test drive

This short section is a introduction to the features of the Simucube system. The first test drive can be done with any simulator, but we recommend Assetto Corsa, Assetto Corsa Competizione, iRacing, or Project Cars.

1. Place the Safe Torque Off button (E-stop) in a solid place where remains quickly reachable to the Driver and where it cannot drop on the floor.
2. Power on the system and verify wheel rotation with the True Drive software. You can already create a profile and adjust some of the settings if you so wish.
3. Start the simulator . Configure the wheel to be used by assigning controls. This step differs from simulator to simulator.
4. Take a test drive and verify wheel operation.
5. Verify also the rigidity of the Simucube 2 installation and the wheel installation.



At any point, if the rigidity of the installation is insufficient, actuate the Safe Torque Off button and stop driving immediately. Solve the issue before attempting further testing.

Simucube 2 motor becoming loose or the simulator rig suffering mechanical failure is potentially hazardous to the Driver, other people near the simulator, and materials.

6. On successful test drive, the Driver can enable the High Torque Mode by using the True Drive software. Wheel will become much more powerful and reactive.
7. Repeat steps 4 and 5 with High Torque Mode enabled.

Useful information for the first test drives:

Driver might hear **audible beeps** already on the first drive. These are the potential causes for these notifications:

- A) Torque saturation / clipping is detected.** The game is giving maximum torque and no additional signal details can be felt. Tune game FFB level to lower value to solve this. You can turn this feature on/off on the Hardware settings tab in True Drive.
- B) On rally- and drifting type games or other aggressive driving, Simucube 2 might beep many times.** This is due to automatic hands-off safety mode kicking in momentarily, which results in these beeps. The normal operating mode is automatically resumed when the Driver is detected to be using the wheel again (additional beeps are played by the device). You can tune this feature on the Hardware settings tab on True Drive and it can be turned off.

Overview

Overview tab (Figure 8) shows the general status information of the wheel, analog inputs and digital buttons. Reset center -button allows the Driver to change the center point of the wheel either temporarily or permanently. If a Simucube Wireless Wheel is connected, its name, connection quality and battery status is shown on under the wheel image. For some Simucube Wireless Wheels, a customized image of the wheel is shown in place of the generic wheel.

Simucube Wireless Wheels

The Simucube Wireless Wheel system enables users to connect sim wheels wirelessly to the Simucube 2. The sim wheel buttons and incremental encoders are connected to a wireless button plate logic module, which wirelessly communicates with Simucube 2. The Simucube controller in turn communicates these button and encoder state changes to the user's PC via USB connection.

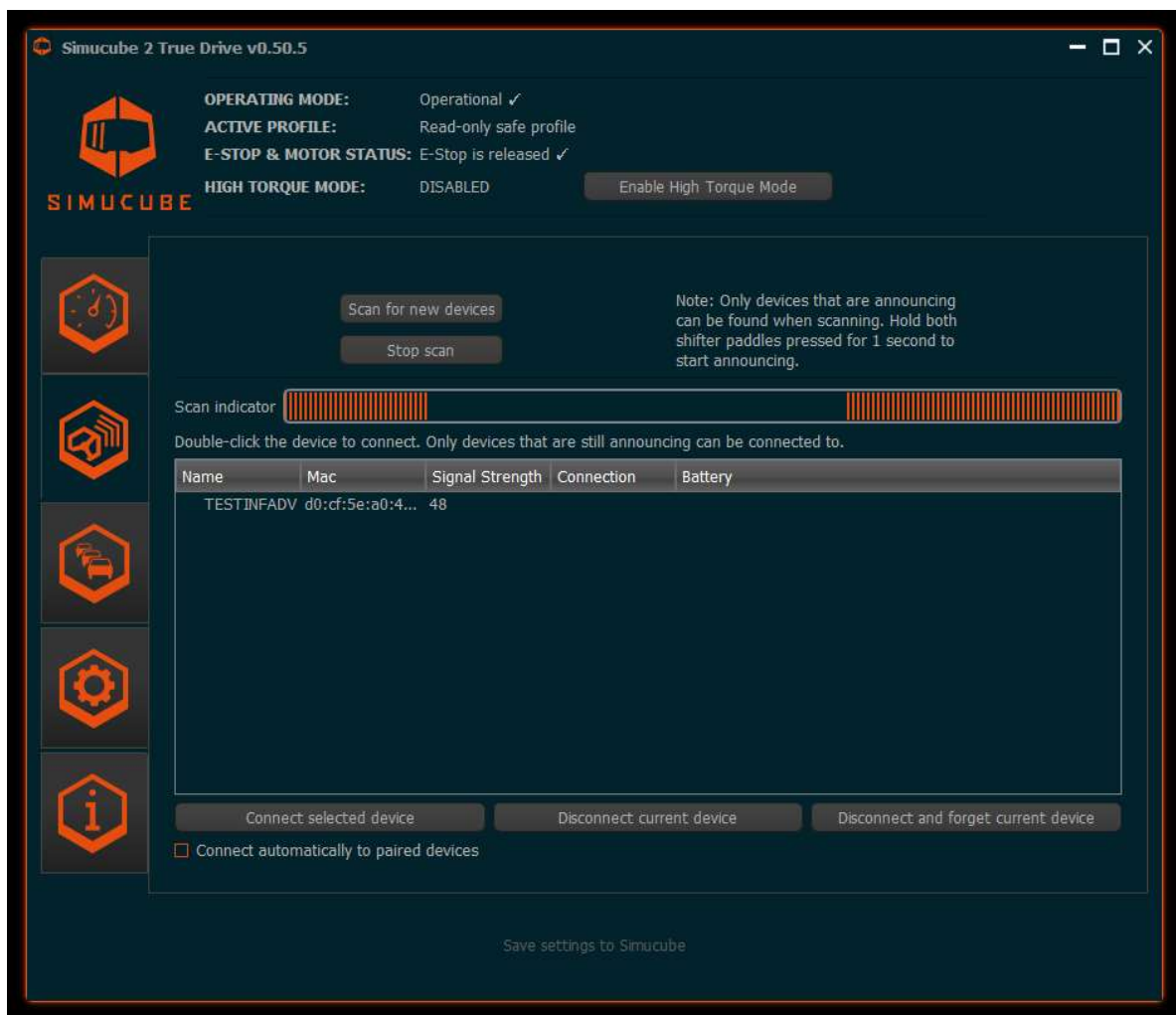


Figure 9 Simucube Wireless Wheel Management

The user interface of Simucube Wireless Wheels is shown in the above figure. Scanning of new devices can be stopped or started. List of found devices is shown. It is possible to manually disconnect from the currently connected wireless wheel and to forget the currently connected wheel. This is useful, if the "Connect automatically to paired devices" functionality (checkbox on the bottom of the tab) is enabled. This automatic mode allows drivers to connect and disconnect previously paired devices without having to use the True Drive user interface.

Connecting a wheel

For connecting a Simucube wireless wheel to a Simucube, the wireless wheel must be in the discovery mode. The discovery mode can be started by switching the wireless wheel power on, or by pressing both of its paddle shifters simultaneously for 2 seconds. The wheel will then stay in the discovery mode for 30 seconds or as long as the paddles are pressed. If the wheel has a status led, it will blink rapidly in the discovery mode.

If a wireless wheel and a Simucube have previously been connected, they will remember each other, and connect automatically if the option to do so is enabled. If a wireless wheel and a Simucube 2 do not know each other, they can be connected by double clicking the wheel name from the True Drive software, or by the separate button below the list of found devices.

After connecting, the status led blinks 3 times in moderate frequency, and the Simucube Wireless Wheel is ready to use.

Disconnecting a wheel

When connected, the Wireless Wheel can be disconnected by pressing both paddle shifters simultaneously for over 5 seconds, or by pressing the “Disconnect current device” button on the Simucube Wireless Wheels tab. After disconnecting, the status led blinks 10 times slowly.

Simucube 2 remembers 8 Simucube Wireless Wheels and will forget the one that hasn’t been seen for the longest time.

Simucube Wireless wheel safety features

Upon disconnecting a Simucube Wireless Wheel, torque generation will be disabled. When reconnecting a wheel, the torque generation will be re-enabled. There will be a slowly blinking button for manually re-enabling the torque shown on the status area (see Figure 8).

Simucube Wireless Wheel manufacturers can also implement a torque off switch to the wheel. If such Simucube Wireless Wheel is connected, and the torque switch is in the torque off -position, it will be also indicated in the status area, but a separate manual torque enable button is not shown.

Simucube Wireless Wheel status led

Simucube wireless wheel status led (on the wireless wheel itself) blinks when the device is advertising and it can be connected to. **Note:** The status led on a Simucube Wireless Wheel stops blinking if the discovery mode is continued over 50 seconds by pressing the paddle shifters. The Simucube Wireless Wheel stays normally in the discovery mode, but the led doesn’t blink anymore. The status led continues working normally after leaving the discovery mode.

Profile management

Simucube 2 has powerful profile management system that allows the driver to set up multiple profiles for use.

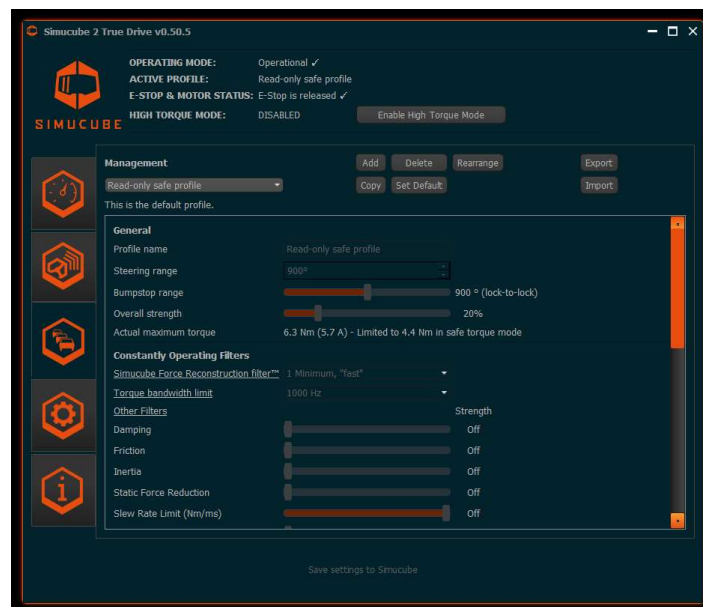


Figure 10 Profile management tab

Main functions of the profile settings:

- Profile can be switched from the dropdown selector
- The "Read-only safe profile" serves as a fallback profile, and is the default profile. It can't be deleted.
- **Add** -button creates a new profile
- **Delete** button deletes current profile. If current profile is the default profile, then the Read-only safe profile is set as default profile.
- **Copy** -button copies current profile.
- **Set as default**- button sets the currently selected profile as default, and it will be activated at Simucube power on.
- Profiles can be exported to a file and imported from file via the Export and Import buttons. Imported profiles are added to the list of profiles and will not delete existing profiles.
- Profiles can also be rearranged via the Rearrange button.

Profile name, steering angle and a variety of other settings can be adjusted via the other functions of the Profiles tab. In-depth descriptions of the multitude of filters will be added in this user guide later.

Profile settings

Profile name

Profile name can be changed. Press Enter after editing to apply the new name.

Steering range

Steering range can be adjusted via this setting.

Bumpstop range

See [Bumpstops chapter](#).

Overall strength

This slider controls the overall force feedback strength.

Constantly operating filters

These sliders and settings adjust the overall feel of the wheel base. They are being constantly applied when the device is turned on.

Reconstruction filter

This filter smooths out low update rate torque signal from the simulator to the maximum possible rate while making the changes between simulator torque updates smooth. The filter predicts torque behavior. Low filters values are reactive also when torque rate or direction changes quickly, but some of the original notchiness from the low frequency remains in the signal. Higher values are smoother, but the torque peaks might overshoot compared to the signal that the simulator produces. This due to the predictive algorithm. Typically, in constant torque modes or in typical driving conditions, there is no apparent lag, and the filter just makes the wheel feel more rubbery towards the higher values.

Torque bandwidth limit

This is a low pass filter that filters out high frequency content vibrations in the force feedback signal. By setting lower values, the force feedback appear to be smoother but some details will be lost.

Damping

Damping is a torque effect which is relatively to the speed of the torque command change rate. It dampens fast torque effects that are the result of the FFB updates from the simulator. The faster torque effect changes, the more torque is generated to resist this motion. This effect is useful, as simulators do not always model tire deformations and car suspensions in a way that includes all dampening features, such as rubber bushings. This is realistic for some simulator&car combinations. Adding Damping and Friction is a good way to give realistic weight to the wheel and reduce oscillatory behavior.

Friction

Friction is a constant torque that adds resistance to the wheel movement. Wheel will become more difficult to turn with this effect. This is realistic for some simulator&car combinations. This effect can be used combination with Damping to make the wheel more stable if there is a tendency for oscillation.

Inertia

Inertia effect is used to give the wheel more weight. The effect resist any attempts to change the current rotation speed of the wheel, and can get be helpful to make the wheel more realistic especially if very light steering wheel is used.

Static Force Reduction

This effect reduces force in long corners, while at the same time, letting the sharp details from kerbs and the road surface through to the wheel. This is useful when the Driver wants to feel every detail with full strength torque effects but does not want to fight against the wheel constantly.

Slew Rate Limit

This effect limits how fast the torque is being changed. "Off" (default setting) means, that the rate of change is unlimited and the rate will be as fast as the Simucube 2 servo drive and motor will be able to accomplish. Limiting the slew rate can be useful to soften the driving feel. If the Driver has experience of other DD wheel systems, limiting the slew rate can be useful to make Simucube 2 feel less active.

Ultra Low Latency Mode

This filter attempts to reduce latencies between the wheel base and the PC. Typically using higher filter setting can reduce the tendency of wheel oscillating in the simulator if driver lets go of the wheel. Using this filter, it may be possible to reduce Damping and Friction filter values and still get a relatively stable, non-oscillatory wheel.

DirectInput fine tuning

This section can be used for fine tuning effects that games can utilize. Not many simulator titles use any of these effects at all.

- If an effect is used and actively controlled by the simulator, a filled balloon ● is shown next to the effect slider. Changing the setting can result in a different force feedback feel in the game.
- If an effect is created but the value is not actively controlled by the simulator, an empty balloon ○ is shown.
- If the simulator has not activated this effect at all, then a dash (-) is shown, and the setting slider has no effect.
- Active DirectInput effects are also listed in the Advanced tab in textual form.
- It is recommended to keep the sliders at their default setting (100% for all except somewhat less for Damping and Friction), as game developers expect these levels.

Simucube 2 Ultimate and early access filters

This section contains various filters that are only available for Simucube 2 Ultimate and those filters that are in development stage.

Hardware settings

The hardware tab can be used to set up those settings that typically remain constant.

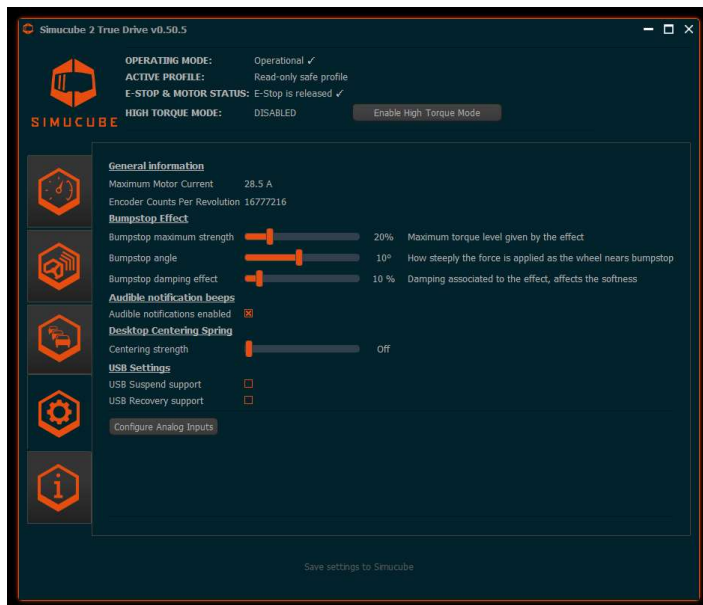


Figure 11 Hardware settings tab

Bumpstops

Bumpstop is a feature that resists the wheel's turn over the steering angle which is set on the Profiles tab. It is possible to change the maximum strength of the bumpstop and the width of area of increasing force when the wheel position nears the bumpstop. In addition, there is a separate damping effect that Driver can use to make the bumpstop feel better.

There are 3 settings that affect the bumpstop settings. Figure 12 illustrates their relation to the steering angle (steering range).

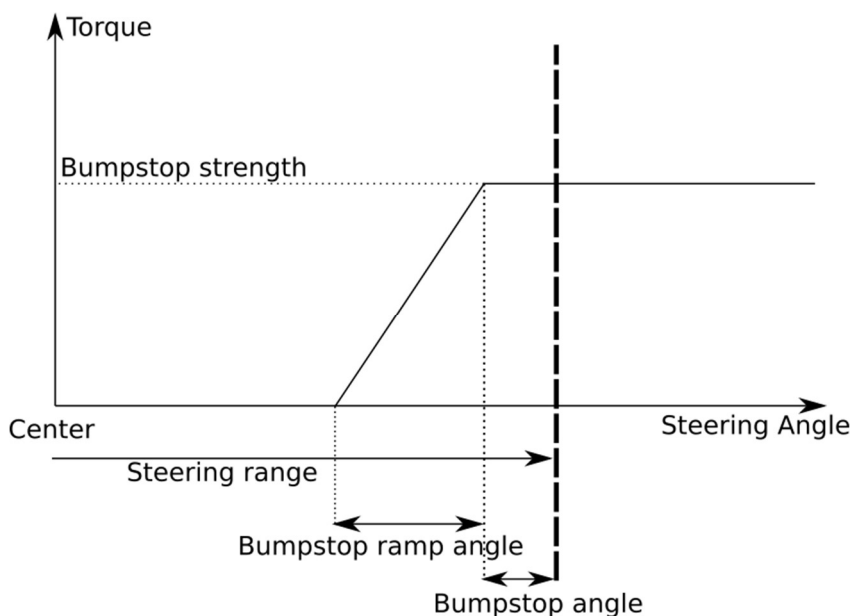


Figure 12 Bumpstop settings explained

On the Profiles tab, Bumpstop Range setting can be used to set the bumpstop to inside or outside the actual axis limits.

- A simulator on PC will see maximum/minimum value of the steering axis exactly at the bumpstop. The same value is seen also when turning over bumpstop.
- Setting up the Bumpstop angle setting to indicate larger than the steering angle can be useful to make sure that the calibration and assignment of steering axis can be done in the simulator without turning against the bumpstop.
- Setting up the Bumpstop inside the steering angle can be used to replace possible simulator generated bumpstop effect with the smooth bumpstop effect generated by Simucube. This is particularly useful in iRacing (wildly oscillating bumpstop force) and in Project Cars (very harsh bumpstop with hard backlash from the limit).

-

Hands-off safety feature

If the driver lets go of the wheel and the wheel accelerates to fast speed, Simucube by default goes automatically to safe torque mode. When driver's hands are detected again and produce force against the wheel, the High Torque mode is smoothly reactivated (if it was active).

The sensitivity of this feature can be adjusted on the hardware tab, and it can also be turned completely off.

Audible status notifications

Simucube will beep every 2 minutes when idle and torque production has been off. This is to enforce driver's to practise operational safety via using the physical safe torque off button to turn off torque, or to power off the device completely.

Additionally, there is a setting enable/disable beep at device initialization complete.

There is also a beep on torque saturation (clipping), which should be avoided as any additional torque is not felt when torque is clipping. This is useful for VR/HMD users or when the Driver drives a simulator where there is no Force Feedback meter or a clipping detector available. This torque saturation beep can be turned on/off via a checkbox on the Hardware tab.

Hardware tab also contains additional buttons and dialogs to set up analog inputs via the D15 connector, and other features. Later revisions of this guide will include documentation for those.

Information / Advanced tab

The last tab includes version information for product and the software.

- If, for whatever reason, a simulator has crashed but has left effects running on the PC, there is a button to reset the Force Feedback device state. This will clear all the device memory managed FFB effects.
- Some firmware status bits are shown in text form. This is useful in development and troubleshooting.
- A debug event log functionality is also available for troubleshooting purposes.

Troubleshooting and LED blink codes

LED colours and blink codes

Simucube 2 has an RGB led on the back of the device. Here are the possible led colours and blink cycles.

Normal operation

| Led colour | Function |
|--------------------------|---------------------------------|
| Blue | Normal operating mode |
| Blue with two RED blinks | High Torque Mode is activated |
| Red | Torque is clipping/saturated |
| Green | Wheel has turned over bumpstop. |

Firmware update

Firmware update has special status LED cycles. They can be used for analysing firmware upgrade status and for troubleshooting reasons on failure.

| Led colour | Function |
|--|---|
| Yellow | Flash erase failed before uploading new flash data. |
| Green blinking | Flash data is being received from PC. |
| Red blinking (after a firmware update attempt) | Received flash data was not compatible with this Simucube 2 product |
| Red | Received flash data was corrupt. |
| Green | Received flash data is compatible with this Simucube 2 product. |
| Blue | Firmware was valid and the device was told to go to firmware upgrade mode by the PC. |
| Blue blinking | Firmware was invalid/corrupt and the device stayed in firmware upgrade mode after power up. |
| Red blinking (at startup) | The device was forced to go to firmware upgrade mode by a special service dongle. |

Troubleshooting instructions

| Symptom | Reason | How to solve |
|--|--|---|
| Unexpected audible beep sound when driving in a corner. | Torque is being saturated / clipped. FFB settings are not optimal. | Recommended: Reduce FFB level in simulator and increase the Strength in Simucube to regain same level of FFB. Other solution: Turn off torque clipping notification on the Hardware tab. |
| Unexpected many beeping sounds in decreasing loudness when driving. FFB goes very weak and wheel feels stiff. The sound is similar to the deactivation of high torque mode notification. Additional beeps with increasing loudness can be heard when Driver's hands are detected back on the wheel | Automatic hands-off detection triggered and Simucube went to the safe torque mode. | Reduce (or turn off) automatic hands off detection sensitivity on the Hardware settings tab. |
| Firmware update in True Drive says 'Simucube was not found in Firmware upgrade mode' on first start | A firmware issue in first shipped production batches. | Allow the system to initialize properly with the Safe Torque Off (E-stop) button not pressed before launching True Drive software for the first firmware update. |

Warranty

This product has a 24-month limited warranty (Simucube 2 Sport and Pro) and 60 months (Simucube 2 Ultimate). Warranty terms are available on <https://www.simucu.be> website.

Manufacturer information

Granite Devices Oy

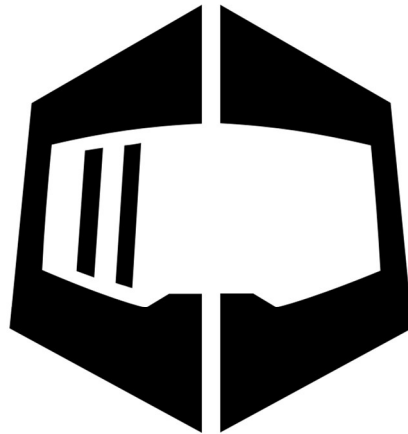
Hermiankatu 6-8 E

FI-33720 Tampere

Finland

<https://www.simucu.be>

In support queries please contact your reseller.



SIMUCUBE

Simucube™, Simucube 2™, SC2™, Simucube Quick Release™, SQR™, Simucube Wireless Wheel™, SWW™, TrueDrive™ and Granite Devices® are trademarks of Granite Devices Oy

By operating this product you agree to Granite Devices terms and conditions.

Contains FCC ID QOQBGM111
Copyright © 2019 Granite Devices Oy
All rights reserved.

